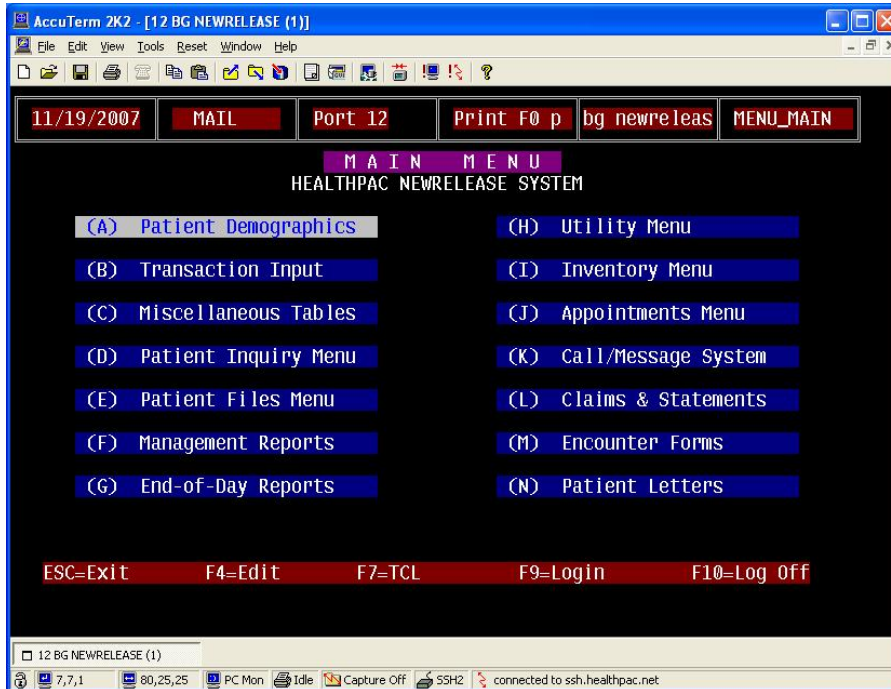
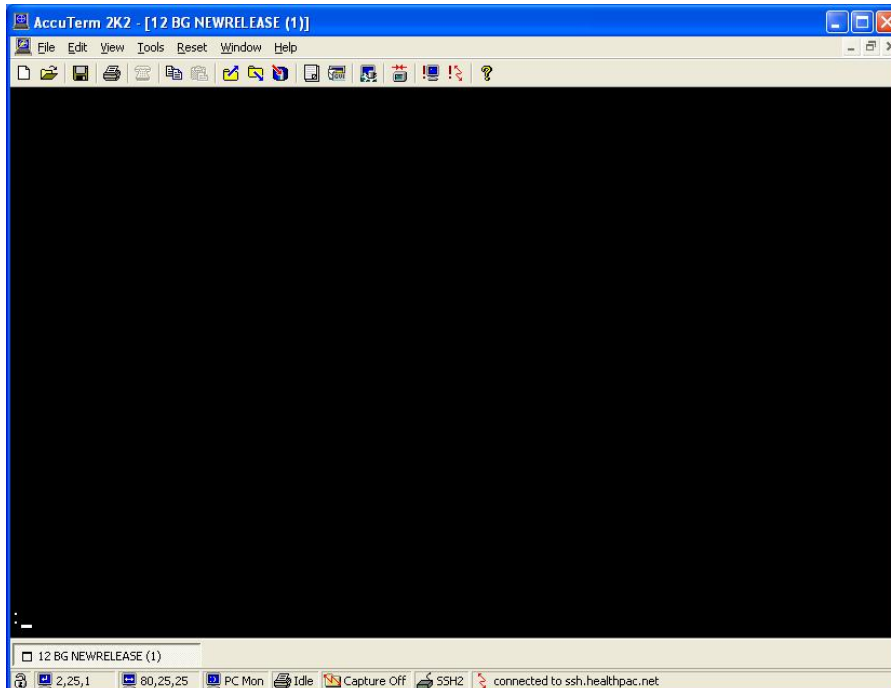


How to check the date of your last Healthpac backup/filesave

1. Login to your Healthpac system and access the **MAIN MENU**.



2. Press the “**F7**” key to access TCL. This is the database command prompt and is represented by a single colon “:”.



- Now you want to select the backup/filesave device. Do so by typing “**SET-DEVICE**” and press Enter.

```

AccuTerm 2K2 - [12 BG NEWRELEASE (1)]
File Edit View Tools Reset Window Help

:SET-DEVICE
Tape Status          19 Nov 2007  10:42:37
#  Type            Density      Owner      Device Name
-----
0 | Floppy           3 1/2" 1.44M |         | \\.\A:
1 | Floppy           Pseudo Floppy |         | C:\Program F...grams\D3Data.D3P
2 | Floppy           Pseudo Floppy |         | C:\Backup_current\Pseudo0.D3P
3 | Floppy           Pseudo Floppy |         | C:\Backup_current\filesave
4 | Floppy           Pseudo Floppy |         | C:\Backup_current\spooler

Enter unit number of device to select:

```

- By default your “filesave” device will be number 3. Some systems are custom so make sure you pick the device with filesave at the end of the device name. Type the device number, in this case “**3**” and press Enter.
- Next, type “**T-READ**” to display the device label, which includes the run date and time.

```

AccuTerm 2K2 - [12 BG NEWRELEASE (1)]
File Edit View Tools Reset Window Help

:SET-DEVICE
Tape Status          19 Nov 2007  10:42:37
#  Type            Density      Owner      Device Name
-----
0 | Floppy           3 1/2" 1.44M |         | \\.\A:
1 | Floppy           Pseudo Floppy |         | C:\Program F...grams\D3Data.D3P
2 | Floppy           Pseudo Floppy |         | C:\Backup_current\Pseudo0.D3P
3 | Floppy           Pseudo Floppy |         | C:\Backup_current\filesave
4 | Floppy           Pseudo Floppy |         | C:\Backup_current\spooler

Enter unit number of device to select: 3
Block size: 500
[1705] Tape device is assigned to a hard disk file (pseudo floppy).
: t-read
Block size: 500
L 01F4 23:24:00 18 Nov 2007 1456730 DATA FILE-SAVE
[94] end of file
: det

```

6. This date should be within the last 24 hours to ensure your system can be restored to a good date. Now type "T-DET" to detach from the device. Type "OFF" to return to the User ID prompt.

If your filesave date is not what you expect it to be, please contact Healthpac support department ASAP. 800.831.9419 Option 1.